



WALL TO WALL  
**SOUND...  
 OF SILENCE**



SUPERIOR ACOUSTIC INSULATION



PUT A  
**STOP**  
 TO NOISE POLLUTION

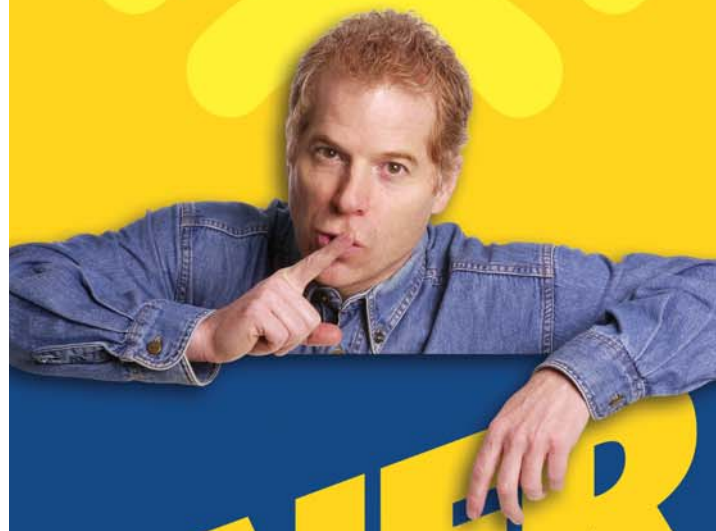
For all your projects; residential, commercial and industrial, ENERMAX will deliver superior sound deadening properties to your partitions.

> **THE ALUMINIUM FACING IS** actually the perfect Type 1 air-barrier (0 L/(s•m<sup>2</sup>) @ 75 Pa). All sounds transmitted through air (the kid playing guitar... your neighbours talking... that plane taking off...) will at last find a match.

STC (Sound Transmission Class) is the common measure to quantify sound attenuation between separated areas. It's very simple, the greater the number, the quieter you are. The National Building Code specifies an STC of 50-55\* for multi-dwellings.

*\* Adjacent to an elevator shaft or a garage chute.*

SEE REVERSE FOR PROJECT PLANNER



**ENERMAX**



9510 St. Patrick St., LaSalle, Québec, Canada H8R 1R9  
 3703 — 101 Avenue N.E., P.O. Box 576, Edmonton, Alberta, Canada T5J 2K8  
 1257 Main Street, Walpole, MA U.S.A. 02081

**1 800 567.2726**  
 Web site: [www.emcobp.com](http://www.emcobp.com)

# PROJECT PLANNER

## SOUND THINKING FOR SOUND PROOFING

### ENERMAX SOUND DEADENING PANEL

(reduces noise transmission through the wall)

#### ENVIRONMENTALLY FRIENDLY PRODUCT

#### > IMPORTANT

Ensure your joints are sealed properly with adhesive tape type (aluminum or "tuck").

#### > STC (Sound Transmission Class)

The STC measures the sound-absorbing capability of a wall. This sound reduction is measured in decibels: a higher coefficient means that more sound is being absorbed, thus reflecting the quality and performance of the acoustic panel.

For instance, during a heated discussion:

- with an **STC frequency of 45**, you would hear the conversation clearly.
- with an **STC frequency of 50**, you would still hear voices but the conversation would be unintelligible.
- with an **STC frequency of 55**, you would no longer hear the conversation.

RESIDENTIAL	RECOMMENDED STC	COMMERCIAL	RECOMMENDED STC
Home theatre	55	Condo/Condo walls	50*
Basement ceiling	52	Condo/Elevator	55*
Master bedroom	52	Condo floor/Ceiling	60
Bathroom	55	Office partitions	53
Exterior walls	43		

\* REQUIRED IN THE NATIONAL BUILDING CODE 95

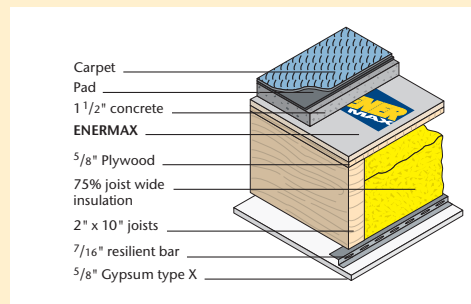
#### > HELPFUL TOOLS AND MATERIAL CHECK LIST

- |   |   |
|---|---|
| <input type="checkbox"/> ENERMAX            | <input type="checkbox"/> Hammer         |
| <input type="checkbox"/> 5/8" Gypsum type X | <input type="checkbox"/> Screwdriver    |
| <input type="checkbox"/> Resilient bar      | <input type="checkbox"/> Caulking gun   |
| <input type="checkbox"/> Wool insulation    | <input type="checkbox"/> Knife          |
| <input type="checkbox"/> Studs              | <input type="checkbox"/> Saw            |
| <input type="checkbox"/> Tuck tape          | <input type="checkbox"/> Chalk line     |
| <input type="checkbox"/> Acoustical sealant | <input type="checkbox"/> Tin snips      |
| <input type="checkbox"/> Nails              | <input type="checkbox"/> Measuring tape |
| <input type="checkbox"/> Drywall screws     | <input type="checkbox"/> Nail apron     |
| <input type="checkbox"/> T-square           | <input type="checkbox"/> Safety glasses |
| <input type="checkbox"/> Leveler            | <input type="checkbox"/> Gloves         |

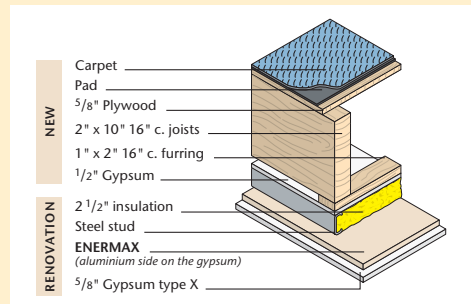


#### FLOOR

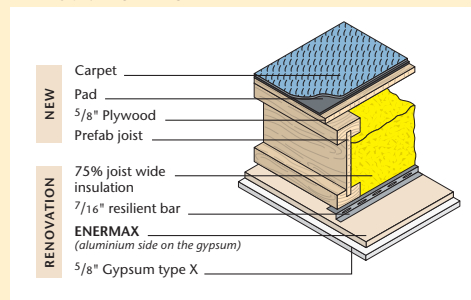
##### NEW



##### RENOVATION

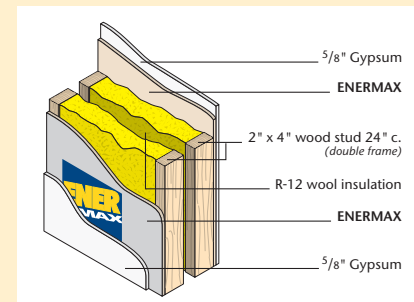


##### NEW OR RENOVATION

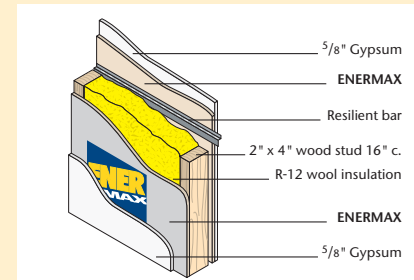


#### WALL

##### STC 62



##### STC 55



##### STC 52

