

EASY TO INSTALL

Enermax 4' x 8'1" panels are lightweight, easy to handle and easy to cut with a utility knife, making projects fast and easy for one installer.

For more information on installing Enermax panels, visit www.soundsmart.ca.



PROTECT YOUR ENVIRONMENT NATURALLY

ENVIRONMENT PRINT

- Enermax panels contain absolutely no Volatile Organic Compound (VOC's), formaldehyde, HCFC, Pantane.
- Enermax panels also improves the energy efficiency of the building.

RECYCLED AND RECYCLABLE

All products that do not meet our strict standards are recycled to create new products. The cellulosic fibre sources are 85% post-industrial and 15% post-consumer. At the end of the building lifecycle, 99% of the panel is recyclable.



PHYSICAL PROPERTIES

	PROPERTY OR TEST	UNIT	ENERMAX™
Thermal Resistance	C-518	R	4.7 ¹
Density	BP	lb/ft ³	14.5
Water Absorption	ASTM C209	%	4.0 ²
Linear Expansion	ASTM D 1037	%	0.2
Water Vapor Permeance	ASTM E1996	ng/(Pa•s•m ²)	1.7
Compression Strength	BP	lb/in ²	24
Air Permeability	BP	L/(s•m ²) @ 75 Pa	nil

1. When installed in conjunction with strapping (3/4" air space).
2. 0% for the aluminum side.

SEE AND HEAR MORE AT SOUNDSMART.CA

Visit our dedicated Web site for more details about the soundproofing effectiveness of BP's Enermax panels.

Specify Enermax for your next project and apply *sound thinking to soundproofing*

9510 ST. PATRICK, LASALLE, QUEBEC, CANADA H8R 1R9
3703 - 101 AVENUE N.E., P.O. BOX 576, EDMONTON, ALBERTA, CANADA T5J 2K8

WEB SITE: www.bpcan.com



Enermax™ panels are the *sound choice* for professionals

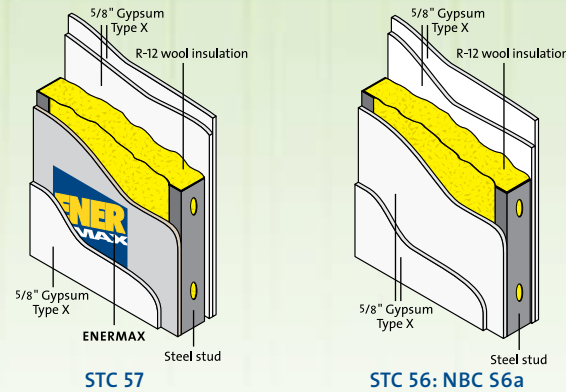


PRINTED IN CANADA 3967 / 2008 02

THE ENERGY ABSORBENCY OF ENERMAX'S all-natural interwoven cellulose fibres combined to the reflective property of its aluminum side dramatically improves the soundproofing efficiency of any wall or floor/ceiling assembly.

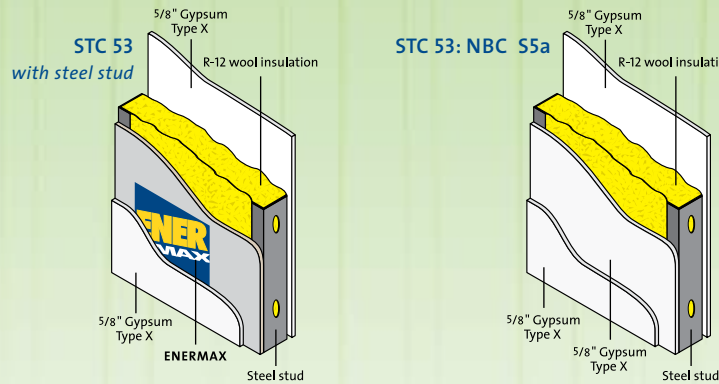
MORE STC FOR YOUR MONEY

Compare Enermax wall systems to systems built with gypsum boards only, and see/hear the Enermax advantage. Enermax increases the global performance of the system by acting on different and complementary sets of frequencies.

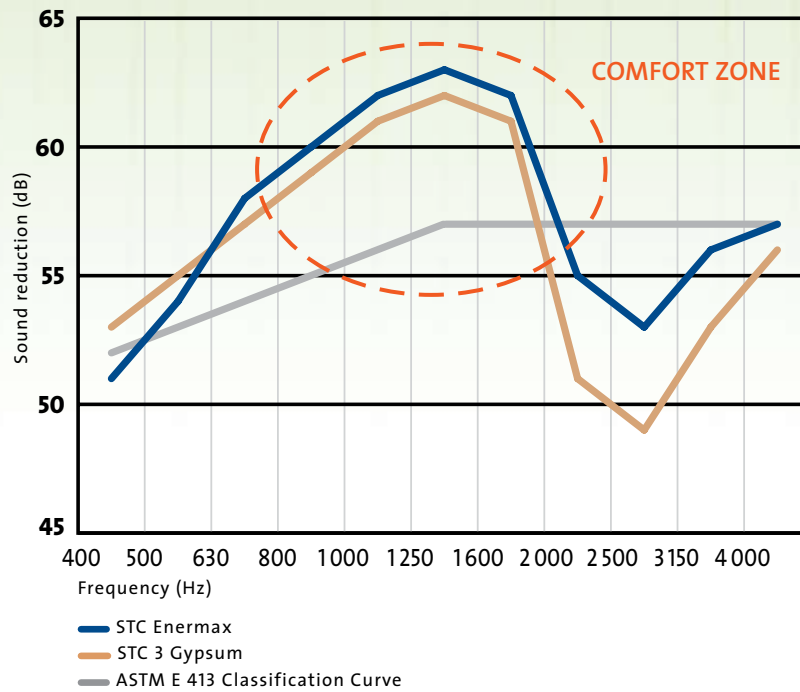


SOUND ABSORPTION

Enermax absorbs noise, making it easy to build walls and ceilings with an STC (Sound Transmission Class) of up to 65. The higher the STC, the less noise is able to pass through walls.



ENERMAX STC 53 WALL ASSEMBLY – CLASSIFICATION CURVE



HEAR THE ENERMAX DIFFERENCE

www.bpcan.com/soundbox

MEASURING DEVICE READING	SOUND
Source: School bell	110 dB 100%
Covered with polystyrene box	100 dB 91%
Covered with gypsum type X 5/8"	90 dB 82%
Covered with ENERMAX	85 dB 77%

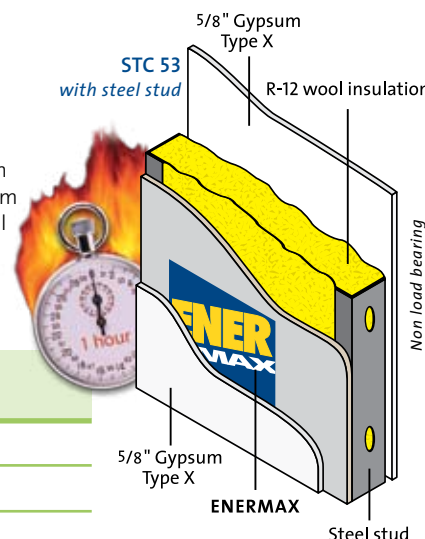
FIRE RATING/ ENERMAX SYSTEM

Enermax has a one-hour fire rating within a system tested as per UL S-101. The system tested was an STC-53 interior division wall with metal studs.

ENERMAX PANEL

FLAMMABILITY REPORT TESTED ACCORDING TO CAN/ULC S102-M88

- Flame Spread: **218**
- Smoke Develop: **46**



RECOMMENDED STC

RESIDENTIAL	RECOMMENDED STC	COMMERCIAL	RECOMMENDED STC
Exterior walls	43	Condos and Multi. walls	55
Basement ceiling	52	Condos and Multi. floor/ceiling	60
Master bedroom	52	Office partitions	53
Bathroom	55		
Home theatre	55		

Section 9.11.2 of the National Building Code specifies that, "... every dwelling unit shall be separated from every other by a construction providing a sound transmission class (STC) of at least 50 and in 9.11.2.1(2) by a construction providing an STC of at least 55 if the unit is adjacent to an elevator shaft or refuse chute."

COST EFFECTIVE

The following table provides budget costs for 15 m² (160 ft²) assemblies.

	STC ¹	COST OF MATERIALS ²	COST PER STC
1.	52	\$415.45	\$7.99
2.	55	\$486.90	\$8.85
3.	59	\$593.05	\$10.05
4.	62*	\$566.34	\$9.13
5.	65	\$645.94	\$9.94
6.	53	\$364.53	\$6.88
7.	57	\$444.13	\$7.79

Many efficient Enermax floor/ceiling assemblies are available for renovation and new construction projects. See the BP "Wall-to-Wall Sound of Silence" project planner for details.

1. Tested according to ASTM E 90-90 "Standard Test Method for Laboratory Measurement of Airborne Sound Transmission Loss of Building Partitions."

2. Based on retail prices in Toronto in December 2006.

* Same as STC 59, however studs are 24" c.c.

ENERGY EFFICIENCY

Enermax also improves the energy efficiency of the building in which it is installed. When installed on the interior of the exterior wall, Enermax adds R4.7 to the thermal resistance of the building envelope.

In this application, furring strips need to be installed on the face of the aluminum foil to benefit from the reflective value of the material.

WALL ASSEMBLIES – NEW CONSTRUCTION

